

Grooved Rigid Couplings - Series-R, Style 5



Applications

- Ideal for fire protection, plumbing, low pressure air, and drainage

Features

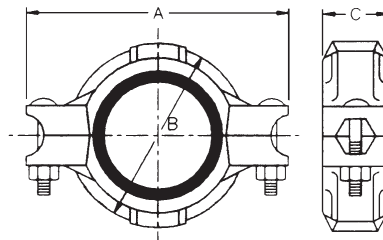
- Lightweight, low pressure
- Small gripping teeth hold the housing into the groove allowing a straight run of pipe and preventing any flex at the joint
- See pages 973, 977-978 for replacement gaskets, nuts, and bolts

Approvals

- UL listed and Factory Mutual approved



Nominal Size	Pipe O.D.	Maximum Working Pressure PSI at 70°F (21°C)	Maximum End Load (Lbs.)	Bolts			Galvanized Ductile Iron	
				qty	size	length	Part # with EPDM gasket	Part # with Nitrile Rubber gasket
2"	2.375"	175	4425	2	3/8"	2"	R72	R72BU
2-1/2"	2.875"	175	6490	2	3/8"	2"	R725	R725BU
3"	3.500"	175	9620	2	1/2"	2-3/4"	R73	R73BU
4"	4.500"	175	12720	2	1/2"	2-3/4"	R74	R74BU
6"	6.625"	175	27570	2	5/8"	3-1/4"	R76	R76BU
8"	8.625"	175	35050	2	3/4"	4-1/4"	R78	R78BU



Dimensions

A	B	C
4-7/8"	3-17/32"	1-27/32"
5-5/8"	3-45/64"	1-3/4"
6-3/8"	4-41/64"	1-27/32"
7-45/64"	5-15/16"	2"
10-25/32"	8-7/64"	2-3/64"
13-25/32"	10"	2-21/64"

P