

# Vapor Recovery Drop Elbows

**Features:**

- for use in two point vapor recovery systems
- one-piece bronze locking arms housed in polymer bushings
- advanced design side lever locking system
- buna seals and stainless steel hardware
- bolt on 3" male outlet included (**VR6000-6**) which can be rotated for extended life
- lubrication fitting on locking stem
- see 6400 series co-axial elbow for single point vapor recovery on page 756



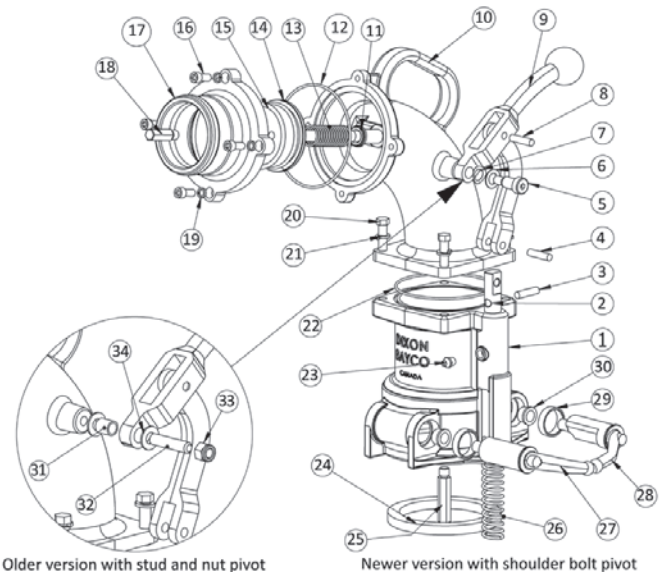
Description	Aluminum	
	Part #	Price/E
3" male adapter with probe, without poppet valve	<b>VR6200NP</b>	<b>\$732.80</b>
3" male adapter outlet with probe and poppet valve	<b>VR6200</b>	<b>834.35</b>

## VR6200 Series Vapor Elbows

### Bill Of Materials

Item #	Description	Part #	Price/E	Qty
1	bottom body	use kit <b>VR6030</b>	---	1
2	stem	<b>6200-7</b>	<b>\$75.95</b>	1
3	stem stop pin	<b>PIN5/16X1¼-P</b>	<b>POR</b>	1
4	stem link pin	<b>PIN5/16X1¼-P</b>	<b>POR</b>	1
5 <sup>1</sup>	shoulder bolt pivot	use kit <b>6200SBK</b> <sup>1</sup>	---	1
6 <sup>1</sup>	SS flat washer	use kit <b>6200SBK</b> <sup>1</sup>	---	1
7 <sup>1</sup>	wave washer	use kit <b>6200SBK</b> <sup>1</sup>	---	1
8	handle pin	<b>PIN 5/16X1¼-P</b>	<b>POR</b>	1
9	handle and linkage	use kit <b>6200-15ASSM</b>	---	1
10	top elbow body	<b>VR6000-1</b>	<b>204.20</b>	1
11	poppet bushing	<b>VR6000-3</b>	<b>13.10</b>	1
12	outlet O-ring only	<b>110319</b>	<b>2.80</b>	1
13	poppet spring	<b>L1110-L2287</b>	<b>18.85</b>	1
14	FKM poppet seal	<b>O-RING-AS-334</b>	<b>11.85</b>	1
15	poppet valve	<b>VR6000-4</b>	<b>61.00</b>	1
16	outlet adapter bolt	use kit <b>6000NPHK</b>	---	4
17	outlet adapter with outlet O-ring	<b>VR6000-6</b>	<b>63.35</b>	1
18	poppet valve stand off	<b>VR6000-5</b>	<b>13.25</b>	1
19	lock washer	use kit <b>6000NPHK</b>	---	4
20	bolt	use kit <b>6000EHK</b>	---	4
21	lock washer	use kit <b>6000EHK</b>	---	4
22	body O-ring	<b>AS156</b>	<b>2.80</b>	1
23	grease nipple	<b>NIPPLE/1</b>	<b>7.10</b>	1
24	main seal gasket	<b>6000-9</b>	<b>8.40</b>	1
25	probe	<b>VR6000-7</b>	<b>10.05</b>	1
26	stem spring	<b>112012</b>	<b>6.10</b>	1
27	left arm	<b>VR6000-9</b>	<b>77.15</b>	1
28	right arm	<b>VR6000-8</b>	<b>77.15</b>	1
29	large bushing	use kit <b>6200BK</b>	---	2
30	small bushing	use kit <b>6200BK</b>	---	2
31 <sup>2</sup>	pivot bushing	use kit <b>6200SHK</b> <sup>2</sup>	---	1
32 <sup>2</sup>	pivot stud	use kit <b>6200SHK</b> <sup>2</sup>	---	1
33 <sup>2</sup>	pivot lock nut	use kit <b>6200SHK</b> <sup>2</sup>	---	1
34 <sup>2</sup>	nylon washer	use kit <b>6200SHK</b> <sup>2</sup>	---	2

<sup>1</sup> items 5 - 7 for shoulder bolt pivot version only  
<sup>2</sup> items 12 - 15 for stud and nut pivot version only



### Repair Kits

Part #	Description	Includes	Price/E
<b>VR6230</b>	complete replacement bottom body	1, 2, 3, 22, 23, 24, 25, 26, 27, 28, 29, 30	<b>\$461.00</b>
<b>6200SBK</b> <sup>1</sup>	replacement shoulder bolt pivot, wave washer and flat washer	5, 6, 7	<b>5.30</b>
<b>6200-15ASSM</b>	replacement handle, linkage and linkage pin	8, 9	<b>58.00</b>
<b>6000NPHK</b>	replacement adapter (4) bolts and lock washers	16, 19	<b>6.20</b>
<b>6000EHK</b>	replacement body bolts and lock washers	20, 21	<b>9.10</b>
<b>6200BK</b>	replacement (2) large and small arm bushing	29, 30	<b>44.10</b>
<b>6200SHK</b> <sup>2</sup>	replacement stud pivot, nylon washer, bushing and nut	31, 32, 33, 34	<b>16.95</b>

**S**